



Catálogo de Cartulinas para Marialuisas

B
BERKSHIRE



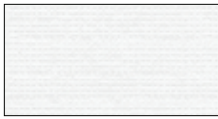
BERKSHIRE SPECIFIER

Berkshire Matboard, 32"x40" (81x102cm)

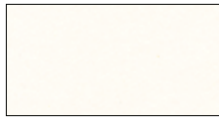
Berkshire Matboard, 40"x60" (102x152cm)



Smooth White
B222 B8-222



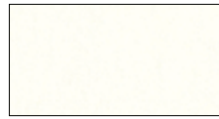
Canvas
B500



White
B402



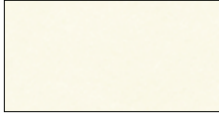
Cloud
B502



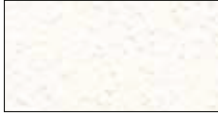
Pure White
B403



Bamboo
B169



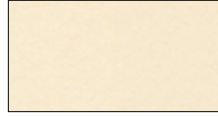
Buff
B504



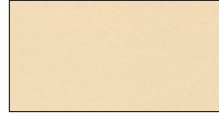
White & Cream Pebble
B505



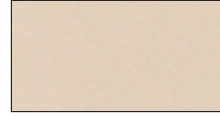
Mojave
B132



Ecru
B508 B8-508



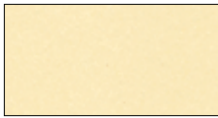
French Vanilla
B126



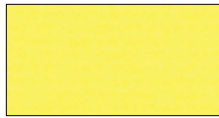
Heritage Gray
B516



Pear
B518



Soft Yellow
B519



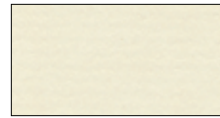
Buttercup
B110



Chamois
B235



Golden
B520



Hay
B350



Marzipan
B703



Herbal
B148



Pistachio
B361



Bright Green
B527



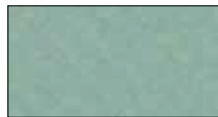
Hunter Green
B524



Forest Shadow
B127



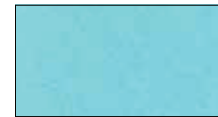
Dark Olive
B453



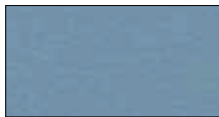
Sea Foam
B146



Ocean Blue
B455



Aqua Blue
B533



Brittany Blue
B538



Heron
B164



Bay Blue
B143



Blue
B542



Yorktown Blue
B79



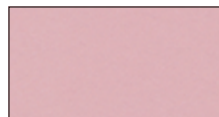
Bottle Blue
B334



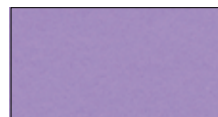
Deep Blue
B545



Hollyhock
B102



Soft Pink
B151



Pansy
B548



Amethyst
B547



Raspberry
B165



Maroon
B038



Merlot
B552



Cardinal
B550



Deep Red
B459



Mulberry
B551



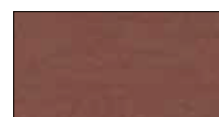
Tangerine
B152



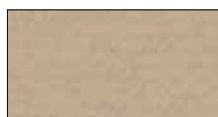
Autumn
B557



Terra-cotta
B556



Burnt Sienna
B555



Tawny
B558



Chocolate
B560



Monastery
B116



Weatherwood
B106

El Color impreso en este catálogo, puede variar un poco del tono real del producto.



BERKSHIRE SPECIFIER

Berkshire Matboard, 32"x40" (81x102cm)

Berkshire Matboard, 40"x60" (102x152cm)



METÁLICOS



SUPERFICIES IMPRESAS

Superficies decorativas, con alma crema



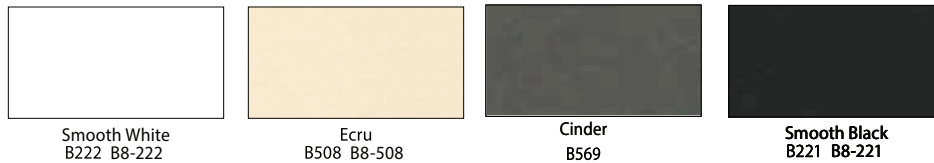
ALMA NEGRA

Superficie decorativa, con alma y respaldo negro solido



CARTULINAS JUMBO

Medida: 101x151cm



BERKSHIRE

Matting

BERKSHIRE MATBOARD

Berkshire, es una línea de cartulinas para enmarcado, que ofrece una gran variedad de colores: Metálicos, Estampados, Texturizados, y Alma Negra. Con muestra amplia gama, logrará combinaciones únicas y hermosas, para resaltar todas sus obras.

INFORMACIÓN TÉCNICA:

- Todos los componentes son tratados con carbonato de calcio para retardar el proceso de envejecimiento
- pH 7.5 – 9.0
- CaCo3 Reserva: 2.0% - 5.0%
- Grosor: .048 - .052" (1.21 – 1.32 mm)
- Medidas: 32" x 40" (81 x 102 cm) y 40" x 60" (102 x 152 cm)

SE RECOMIENDA PARA:

- Dar decoración a los enmarcados en general
- Preservar las obras de arte
- Conservación en Posters y Fotografías

Distribuido por



marcosymarcos.mx



ventas@marcosymarcos.com.mx

 55 3038 0901


Crescent®

100 W. Willow Road, Wheeling, Illinois 60090 U.S.A.

www.crescentcardboard.com • 1.847.537.3400

Printed in the U.S.A. • Copyright 2015

® Registered trademark of Crescent Cardboard Company, L.L.C.